



SEACASE – SUSTAINABLE EXTENSIVE AND SEMI-INTENSIVE COASTAL AQUACULTURE IN SOUTHERN EUROPE

STREP Project

FP6-2005-SSP5A

European Commission

Jan 2007 - Jan 2010



www.seacase.org

Difficulties



Increased competition
for coastal areas

Low-price products
intensive aquaculture



Positive Effects



Environmental protection
and restoration in areas
of ecological interest

Employment opportunity
and development in rural
and coastal areas



Objectives

To develop effective tools for higher:

- **Competitiveness**
- **Productivity**
- **Profitability**



SUSTAINABILITY of extensive and semi-intensive coastal aquaculture systems in Southern Europe



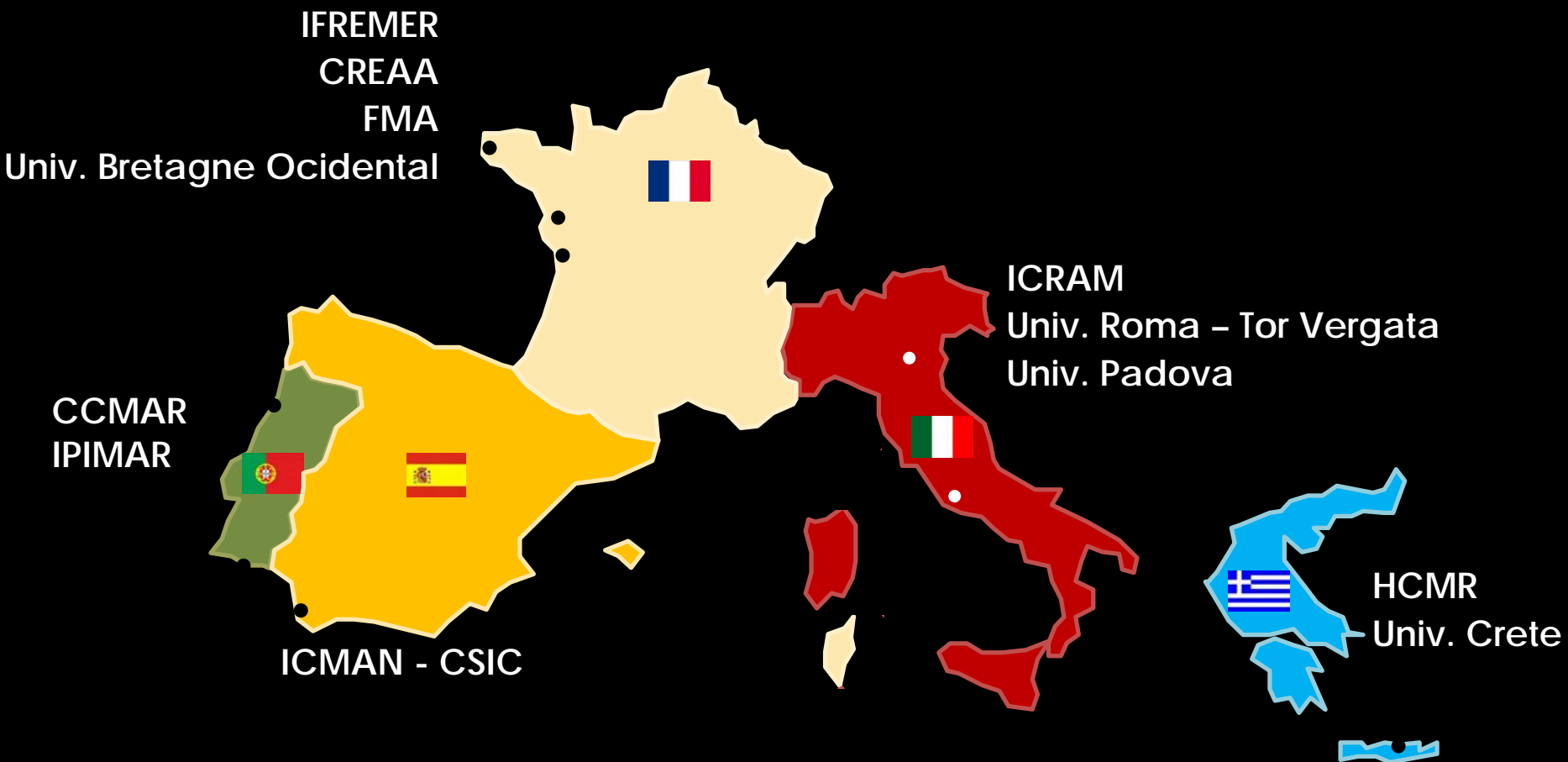
Minimizing environmental impacts

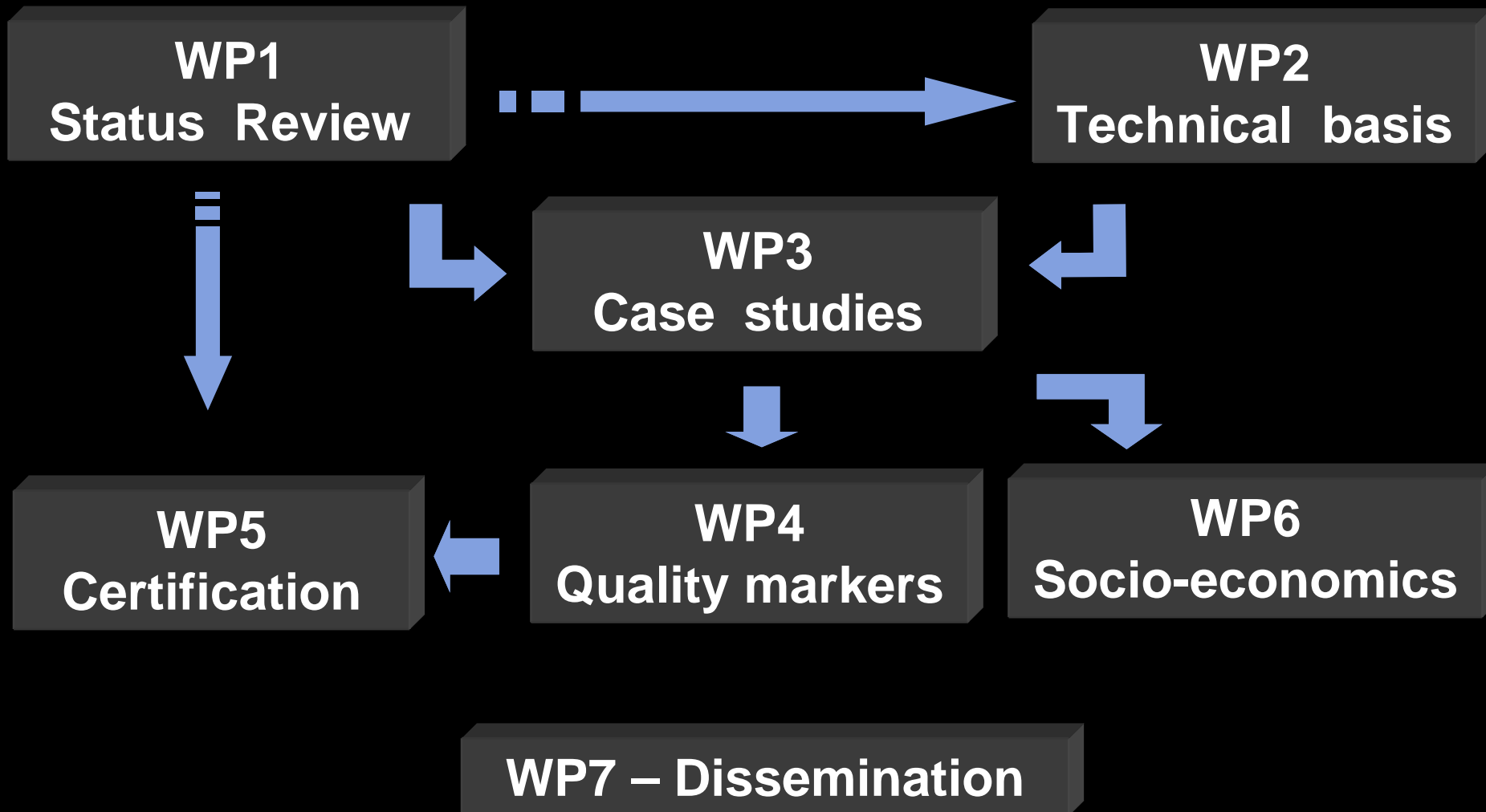


Improving quality & public image of products



Partnership





Review of current status

OBJECTIVES:

Review current status of extensive and semi-intensive production practices



1. Historical background
2. Identification of production areas
3. Description of main methodologies used
4. Aquaculture Evolution

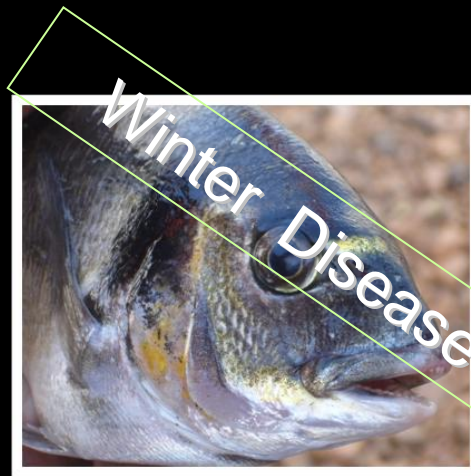
OBJECTIVES:

Optimising production systems through technical improvements

Slaughtering Methods



Publication of
Slaughtering Manual



Adaptation to
low
temperatures

Eco-friendly Feeds





SEMI-EXTENSIVE NURSERIES IN LAGOONS/PONDS

Optimize the early stage of the rearing in marine fish species under extensive or semi-extensive conditions.



GREECE, ITALY, FRANCE AND PORTUGAL

SEMI-INTENSIVE POLYCULTURE IN EARTHEN PONDS



Test the production of seabream and sole, at different densities and using eco-friendly feed.



PORTUGAL AND SPAIN

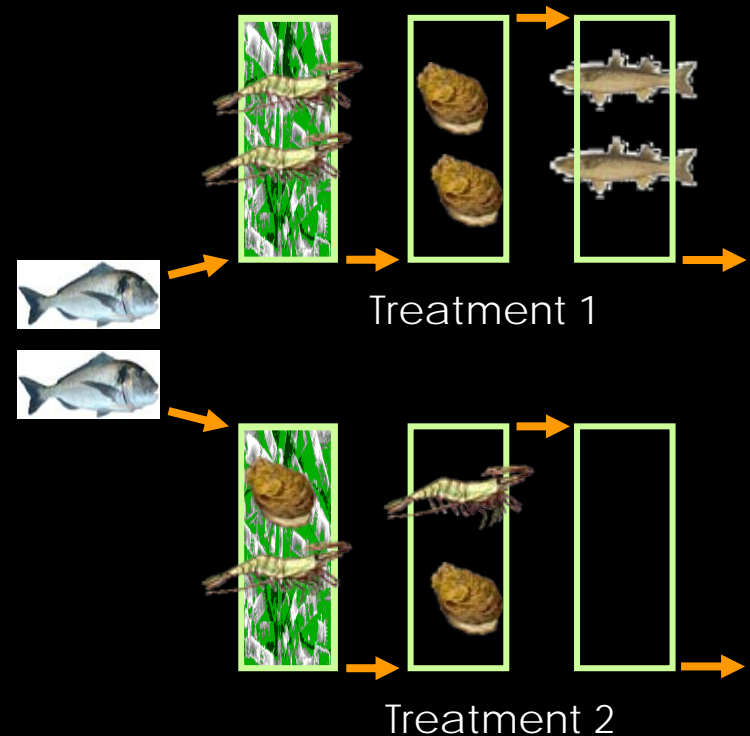


INTEGRATED SYSTEM: FISH – MICROALGAE – SHELFISH AS AN EFFLUENT TREATMENT POND SYSTEM

Value the integration of extensive aquaculture in a marine fish hatchery, as treatment of intensive system effluents.



FRANCE



VALLICULTURE



Optimize farming protocols for gilthead seabream, by diversifying seeding and harvesting strategies.



ITALY



INTEGRATED MANAGEMENT OF MARINE EXTENSIVE PONDS FOR A SUSTAINABLE EEL FISHERY

Promote the use of coastal wetlands as extensive systems to produce eel genitors for restocking natural populations.



FRANCE



EXTENSIVE POLYCULTURE IN INTERTIDAL EARTHEN PONDS

“ESTEROS”



Evaluate the use of traditional extensive farming system in the earthen ponds which are used to on-growing fish in the South-East of Spain.

SPAIN

Quality Markers

OBJECTIVES:

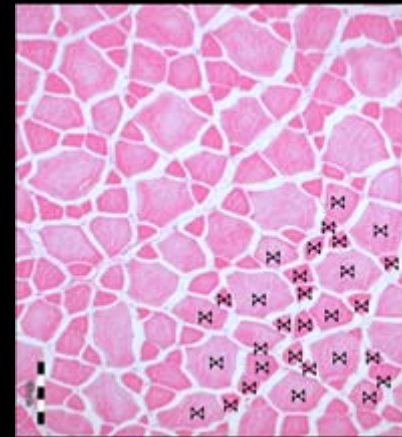
Development 'quality markers' to facilitate traceability and differentiate products

FINAL PRODUCT



Sensorial
Analyses

Muscle
Characterization



FRANCE AND PORTUGAL



Body
Composition

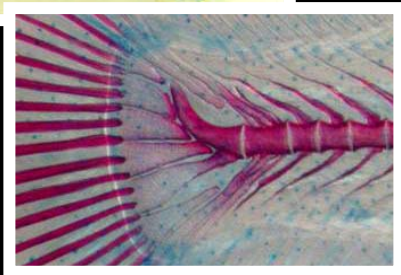
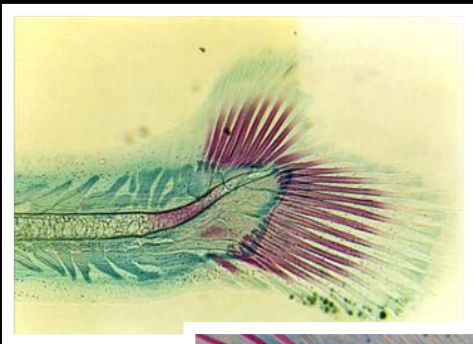
Quality Markers

OBJECTIVES:

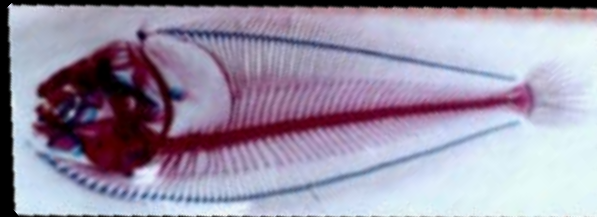
Development of 'quality markers' compare wild with semi-intensive and intensive reared juveniles

LARVAE AND JUVENILES

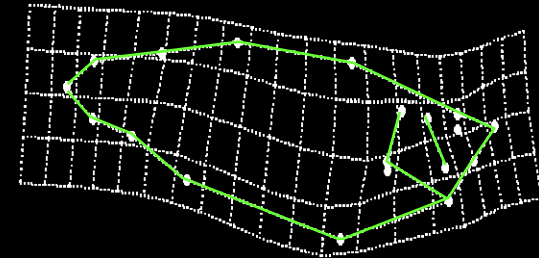
Skeletal anomalies



Lateral Line Analyses



Shape Analyses



ITALY, PORTUGAL AND GREECE

OBJECTIVES:

Development of codes of conduct and define bases for a certification process



Codes of Conduct for each case study

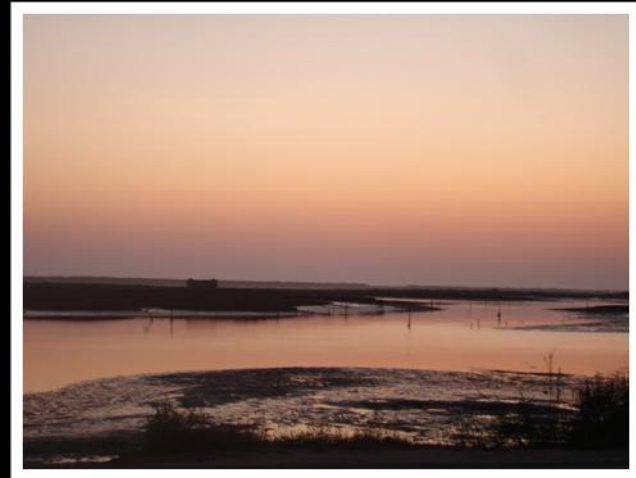
Code of Conduct for Extensive and Semi-intensive Aquaculture



OBJECTIVES:

To assess economic viability and accounting for patrimonial non-market costs and advantages

Patrimonial economic assessment



Socio-economical evaluation of project case studies










Dissemination

OBJECTIVES:

Disseminate the activities, results and outcomes

1. Web Page www.seacase.org
2. Newsletters (biannual)
3. Presentations, posters and abstracts
4. Press releases, articles
5. Workshops

7 National Workshops

CASE STUDY	COUNTRY	DATE
Extensive Polyculture		Mar 09
Patrimonial Audit		Sep 09
Integrated systems		Oct 09
Eel Management		Oct 09
Extensive Aquaculture		Dec 09
Valliculture		Dec 09
Semi-intensive Polyculture		Jan 10



Sustainable Extensive And Semi-intensive Coastal Aquaculture in Southern Europe



Themes Themes Themes Themes

- » SEMI-EXTENSIVE NURSERIES
- » EXTENSIVE SYSTEMS IN PONDS AND LAGOONS
- » SEMI-INTENSIVE SYSTEMS
- » INTEGRATED SYSTEMS
- » TECHNICAL IMPROVEMENTS
- » PRODUCT QUALITY & CERTIFICATION
- » STATUS OF EXTENSIVE AND SEMI-INTENSIVE AQUACULTURE AND SOCIO-ECONOMIC ASSESSMENT

Abstract Submission: November 12

Registration deadline: December 15

Information: www.seacase.org/workshop.html

Contacts: seacase@ualg.pt | tel: +351 289 800 900 Ext: 7595



Thank You!



www.seacase.org